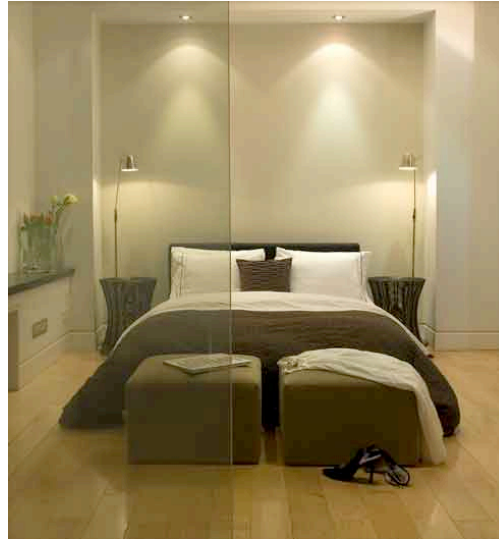


A decorative graphic on the left side of the page consists of a grid of colored squares. The top row has two light gray squares. The bottom row has three squares: a light gray square on the left, an orange square in the middle, and a lime green square on the right. Below the orange and lime green squares are two more squares: a dark gray square on the left and a black square on the right containing a white circular logo with the number '38' inside.

architectural work

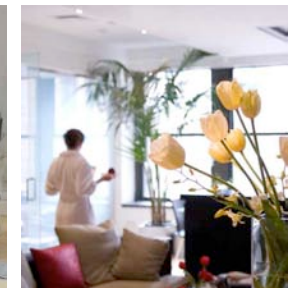
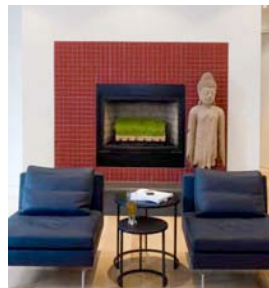
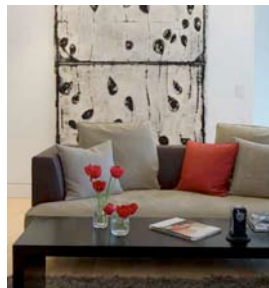
38 Spatial Inc. is a collaboration of young, talented architects and designers. The firm founded in 2009, conceived by Alexander D. Barrett, managing the efforts of two offices, Jackson Butler of Marin, practicing architect for 20 years and head of the design team, Michael Roche of San Francisco with twelve years of design experience. With office presence in St. Helena and New York City, 38 Spatial is a full service architecture and design firm specializing in contemporary residential and commercial projects. Regardless of budget or scale, buildings are for people and it is in our core belief that every contribution to the built environment should be thoughtful and purposeful. It is our goal to provide seamless client service through the often times chaotic process of making spaces real places. Our projects aspire to enrich one's experience of space, light, context, materials and craftsmanship through the experience of architecture. Driven by content and context, each commission is designed with a sensitive regard to both site and function, coupling thoughtful design with today's technology. From foundation to finish, from preliminary design sketches to post occupancy satisfaction; we believe every detail is important. Innovation and quality, without loss of a contextual reference, is our principle concern. Whether an interior renovation or new construction, 38 Spatial, Inc. delivers efficient, cost effective, creative, turn key services.



The Loft new york, ny



This space consist of 1700 square feet of area with ten to twelve foot ceilings. The location of the structural and mechanical systems of the apartment had already been fixed by it's existing conditions. The space composed of a rectangular floor plan with the north wall filled with full length windows. Conceptually, the client wanted an open floor plan to allow guests the ability to view the New York cityscape from all rooms. The use of "smart glass" allowed guest the entire viewing potential and provided privacy when needed by bedroom occupants.



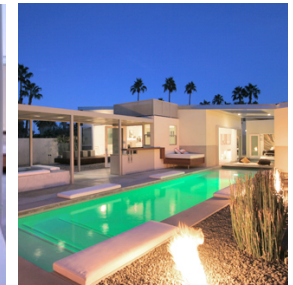
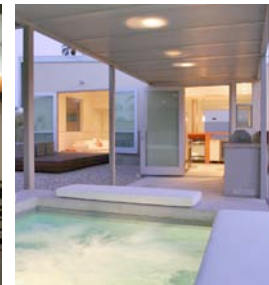
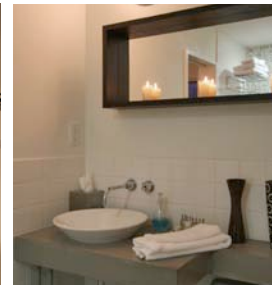


cdps palm springs, ca

Awarded 10 best new Homes;
Metropolitan Home 04
Dwell Home Tour December 06
Palm Springs Modern Tour



Water is the essential element of desert living. Its relationship to the body through visual, auditory, and sensual experiences is the core idea of this residence. This residence also recognizes the human body's geometric relationship to the desert's horizontality, just as the desert's landscape collides with the surrounding mountains, creating dramatic visual tension. A further important consideration is an awareness of the sun's path over the site, which is critical in understanding natural passive heating and cooling systems. Finally, this residence offers the simultaneous experience of indoor and outdoor space, creating an expanded sense of living.





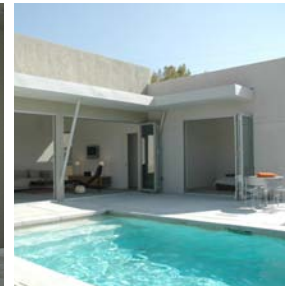
pollen8, dhs1
desert hot springs, ca



Continuing with the desert concept, this developer home communes with nature through its connection to the site and views as well as its use of building materials.

The building orientation to views and the sun's path lend itself to indoor and outdoor living with expansive folding doors which open to gardens and water.

The entire home is built with structural insulated panels (sip) which gives a high value of insulation for the desert climate.





r/p
san anselmo, ca



This new office space was design to meet the client's wishes to reinvent the idea of wealth management, from conventional to a more contemporary design, as well as creating a space for local artist to use as gallery exhibits.

Located in an existing building in San Anselmo, the 1500 square foot space was sectioned off into three zones, entry and meeting, files and open work space. The entry sequence offers exhibit display walls leading the visitors to the greeting area and conference room. The conference room is set up to be flexible in use, either open to the work space or closed using movable "barn doors", thus giving a sense of openness of a gallery and privacy for meetings.





sunset santa monica, ca

publications:

"west coast rooms": rockport publishing
LA Architect



The core design idea for this remodel/addition utilizes the full potential of the tiered site though access to exterior spaces, indoor/outdoor relationships and by creating the perception of space through the collection of memories.

The design introduces landscape as the key feature though the use of trellis', courtyards, sun decks, gardens and the waterfall koi pond. These features act as "memory anchors": elements which are initially engaged along the circulation path, then give the perception of space by revisiting the same element from different vantage points. The pond is experienced along the entry stairs, reappears from the living, master and again from the upper sun deck. The wooden trellis is used at the front entry and again in the interior along the family room garden looking glass to reinforce its connection to the exterior. The trellis is found again on the sun deck, grounding the space as one views far off Catalina Island.

